



**GENERAL
BROCHURE**





ABOUT BFT DRIVES

BFT Drives is an independent, dynamic Company based in Italy.

We operate as a worldwide supplier of a high range of mechanical, electrical and hydraulic equipment in various fields.

Our team consists of highly qualified and experienced professionals, with international experience and proven technical, problem solving and consulting skills.

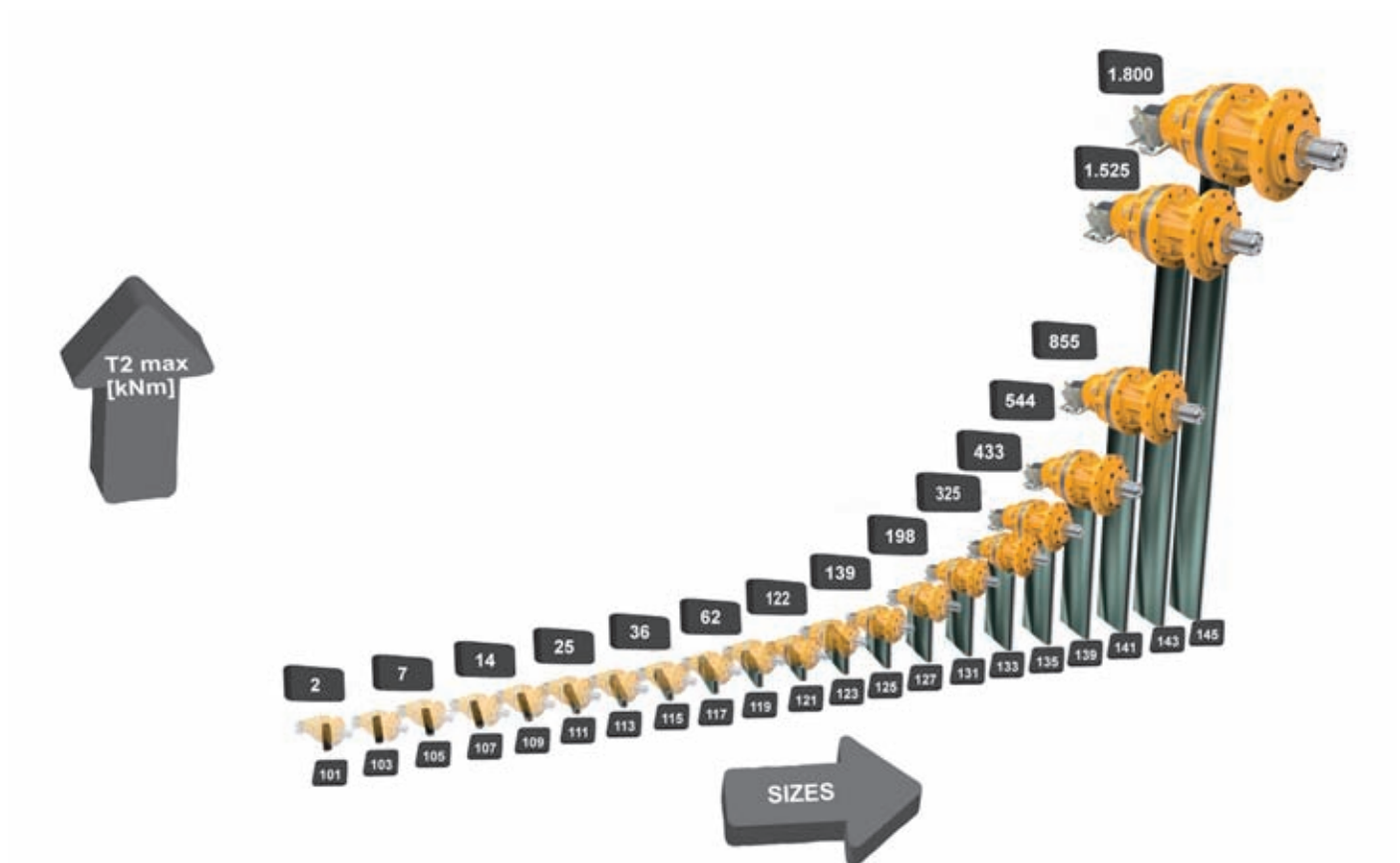
Company's mission is to provide high-quality products and the best customer service. We are able to provide you with high technology solutions, both standard as well as custom made, according to your specific needs.

Using latest technologies and our know-how we are able to assist customers in finding the best solution for the application.

Over the years our team has gained respect and notoriety thanks to the excellent work done and the quality of services provided, accompanying our customers in all phases of their projects, from pre-sales to post-sales.



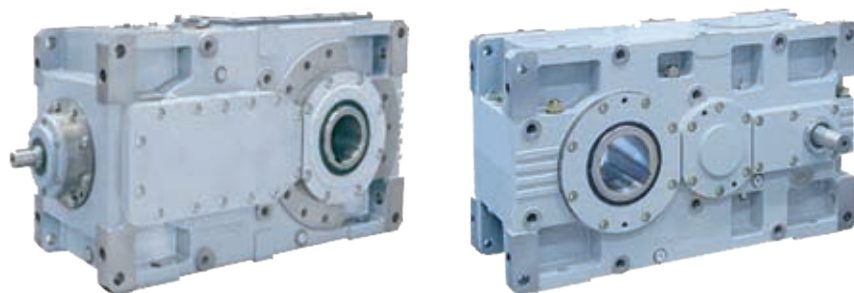
PLANETARY GEARBOXES



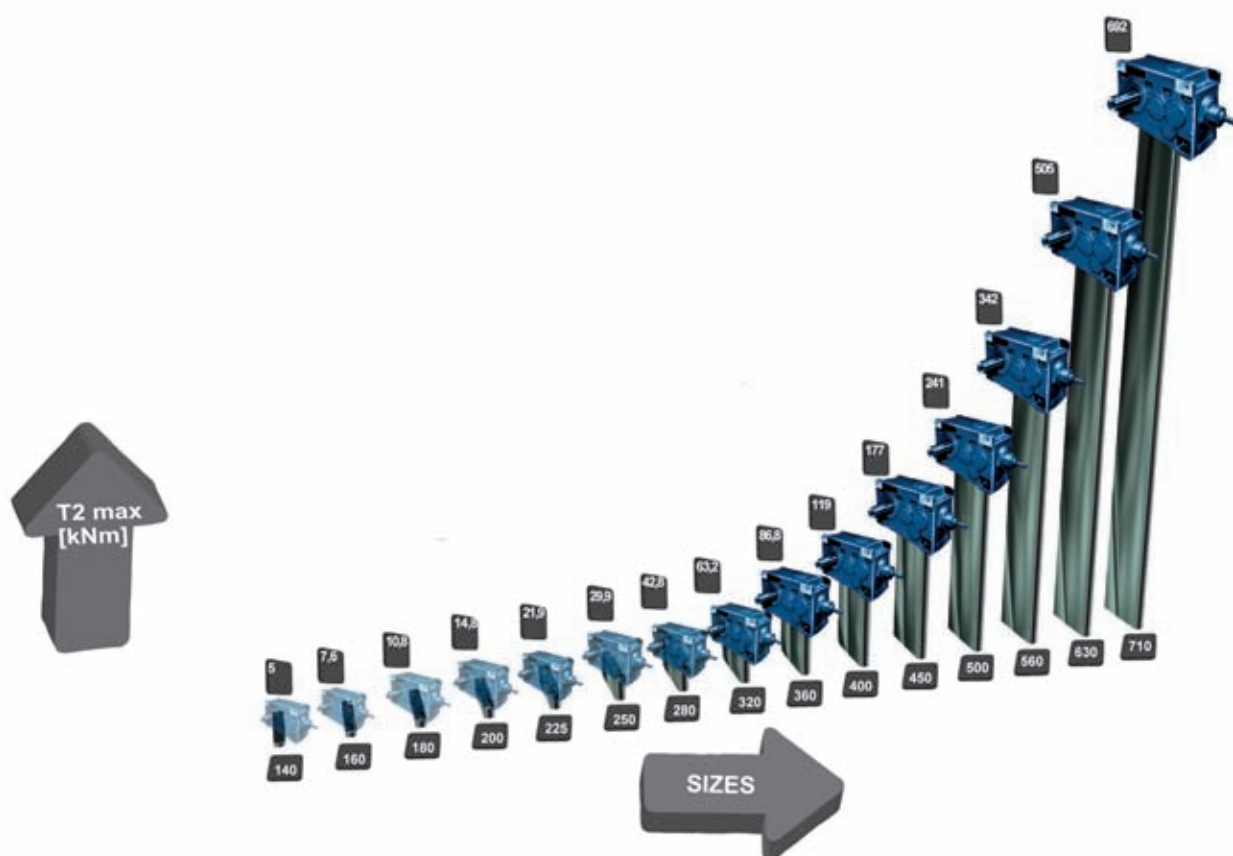
MAIN CONSTRUCTION CHARACTERISTICS:

- gearboxes up to 1.800.000 Nm
- in line and right angle
- flange mounted – shaft mounted – foot mounted
- 24 months warranty
- shortest delivery among competitors

HELICAL AND BEVEL HELICAL GEARBOXES



Power (kw)	Min 0,3 Max 10.300
Torque (Nm)	Min 1.700 Max 690.000
Ratio	Min 1/1,10 Max 1/800



MAIN CONSTRUCTION CHARACTERISTICS:

- Case made in cast iron.
- Worked on all surfaces in order to have a wide fixing and assembly possibilities
- Case hardening gears, quench and tempering before grinding
- Case hardening GLEASON spiral conical gears, quench hardened and torque lapped
- Reduction gears (except hollow shafts) are built in 42CrMo4 while input shafts are built in 16CrNi4 UNI 7846-78
- High quality and duly sized tapered rollers or revolving rollers bearings are used
- Good components execution as well as accurate assembly guarantee high efficiency

MOBILE GEARBOXES



	Torque (Nm)	Ratio	Machine weight
WHEEL DRIVE	up to 60.000	up to i=153	2,5 to 36 ton

WHEEL DRIVE



	Torque (Nm)	Ratio	Machine weight
TRUCK DRIVE	up to 330.000	up to i=364	5 to 45 ton

TRUCK DRIVE



	Torque (Nm)	Ratio	Pulling force
WINCH DRIVE	up to 42.000	up to i=108	up to 170.000 N

WINCH DRIVE

All units available with parking brake and suitable for most standard or cartridge, fixed or variable displacement motors

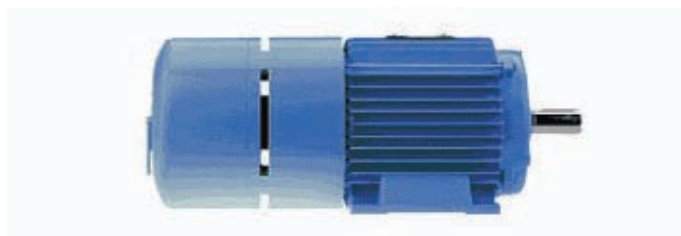
MOTORS



ELECTRIC MOTORS



ATEX ELECTRIC MOTORS



BRAKING ELECTRIC MOTORS



ORBITAL MOTORS



AXIAL PISTON MOTORS AND PUMPS

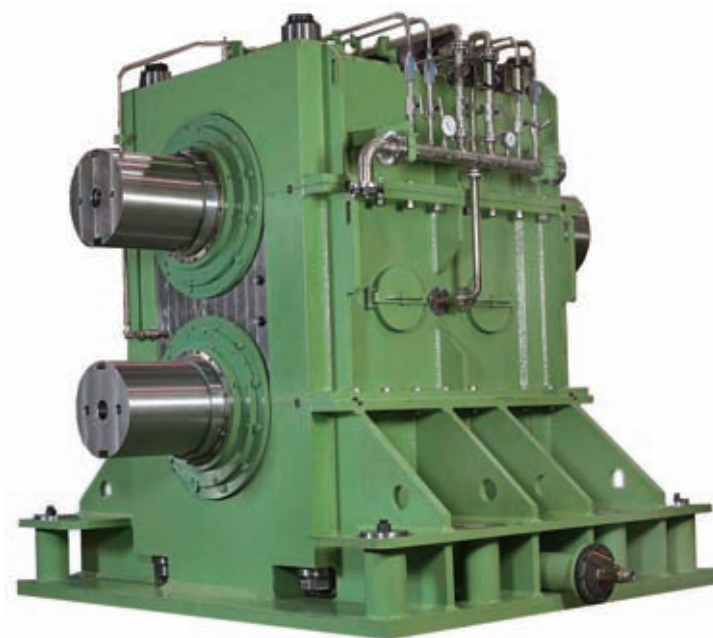


RADIAL PISTON HYDRAULIC MOTORS

SPECIAL GEARBOXES

MAIN CONSTRUCTION CHARACTERISTICS:

- Gears: pinions and wheels are made in case-hardened steel (HRC58-60) with accurate grinding tooth profile CLASS DIN 6 – 3961 after treatment.
- Case: Electrowelded execution steel with stress relieving and internal painting. Completed with inspection covers, breathers, lifting hooks bearings and seals: made in Europe calculated for long life.
- Gearboxes assembly is performed by skilled technicians.
- Gearboxes are submitted to a final no load test in our premises
- Gearboxes are supplied together with use and maintenance manual, materials and test certificates.



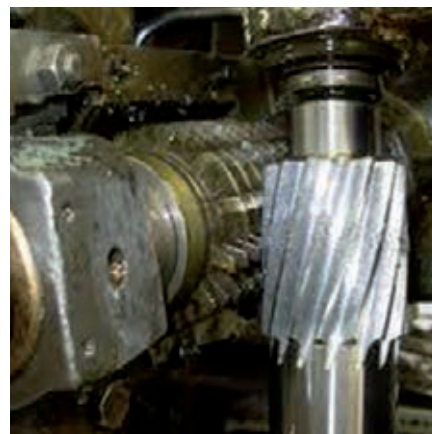
CV60

Crop Shear



DOUBLE TAIL BRAKE

GEARS



MAIN CONSTRUCTION CHARACTERISTICS:

	Diameter	Module	Lenght	Angle
Straight	max 2.000 mm	max 25	max 1.200	
Helical	max 2.000 mm	max 25		
Spiral	max 600 mm	max 13		up to 60°

OTHER DIMENSIONS ON REQUEST

GEAR, ELASTIC, FLEXIBLE AND HYDRAULIC COUPLINGS



Material	C45 Steel construction
Dimension	diameter from 111 to 825 mm
Performance	nominal torque from 1.700 to 835.000 Nm

TOOTHED COUPLINGS

Material	C45 Steel construction
Dimension	diameter from 60 to 500 mm
Performance	nominal torque from 3.000 to 250.000 Nm



ELASTIC COUPLINGS



BARREL COUPLINGS

FLEXIBLE DISC COUPLINGS



FALK STEEL FLEX COUPLINGS

HYDRAULIC COUPLINGS

UNIVERSAL SHAFTS



Material	Steel construction
Dimension	diameter from 58 to 1.200 mm
Performance	nominal torque up to 12.000.000 Nm

UNIVERSAL SHAFTS





BFT DRIVES S.r.l
Strada Provinciale alle valli, 20
24048 Treviolo (BG) - Italy

Phone: +39 - 349 6569292

Phone: +39 - 345 3013365

Phone: +39 - 340 8142428

Mail: bft@bft-drives.it

Web: www.bft-drives.it